

HVL Range

A range of robust macerators with inherent pumping capacity for land, marine or offshore applications.

PROCESS INPUT:

Process effluent containing solids.

PROCESS OUTPUT:

Process effluent, solids macerated to a small particle size.

CAPACITY RANGE:

Refer to table.

TYPICAL ELECTRIC MOTOR DRIVE SIZES:

Refer to table.

Operation

Designed for use in sumps and tank fed arrangements in conjunction with screening units, the exposed face action of the Horizontal/ Vertical Line (HVL) range of macerators disintegrates solids and returns the end result to the main flow utilising its inherent pumping characteristic. A full range of various kilowatt ratings and sizes (the model refers to metric diameter of the impeller) is available, suitable for installation in every kind of system. Meticulous attention to design and construction ensures effective maceration of screenings.

Open-face maceration allows the rapid maceration of textiles and other non-metallic objects. Various impeller design options may be specified for small or large particle size (fine or coarse maceration). This unit is unsurpassed in its durability of all moving parts and elements. The direction of rotation is fully reversible.

Construction

The macerator element consists of a cast iron canopy and head enclosing a corrosion resistant heat treated stainless steel alloy impeller, mounted on a high tensile nickel steel shaft, rotating within a stationary cutter ring of abrasion and corrosion resistant cast nickel alloy.

HVL is robustly constructed for minimum maintenance. Bearings are extra heavy duty, lifetime sealed & protected from seal failure with a bleed-off port. The seal is a dual-purpose vacuum/pressure mechanical type with the option of seal flushing available on request.



Flanges are to DIN standard, or other specification on request. The motor element is continuously rated and totally enclosed and can be wound to suit most voltages and frequencies. An integral bar release gear permitting external jam release is provided. Corrosion resistant or alternative materials are available on request.

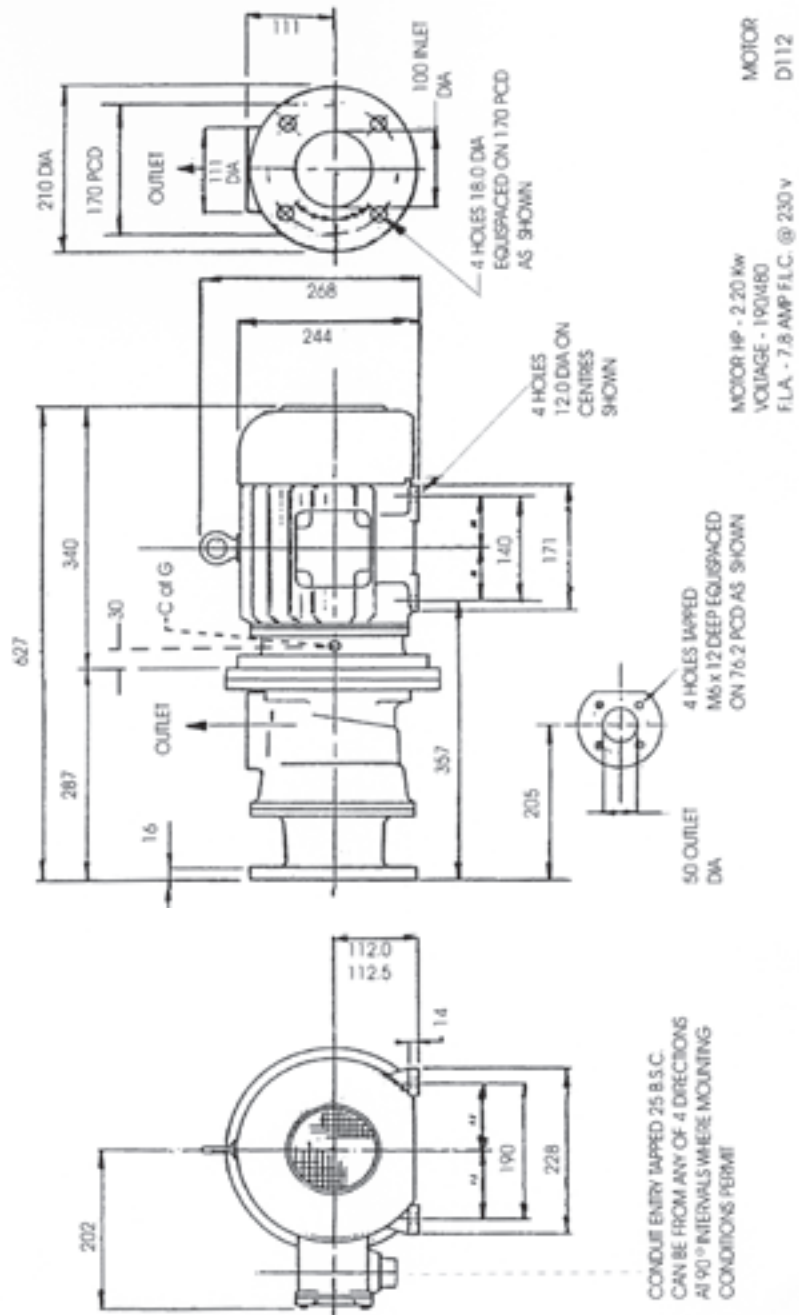
Installation

HVL can be mounted horizontally or vertically as required.

Model	150	180	200	250	300
*Solids Handling Capability	< 0.1m ³ /hr	< 0.2m ³ /hr	< 0.5m ³ /hr	< 1.0m ³ /hr	< 1.5m ³ /hr
Flow Rate	7m ³ /hr	12m ³ /hr	25m ³ /hr	40m ³ /hr	65m ³ /hr
Maximum Total Head	< 1.2m	< 1.2m	< 4m	< 1.2m	< 1.2m
Drive size Range	2.2kW	4.0kW	5.5 or 7.5kW	7.5kW	11.0kW
Speed	1450 rpm	1450 rpm	1450 rpm	960 rpm	960 rpm

* Figures based on solids containing a high percentage of water, typically sewage screenings, food, fruits, vegetables etc.

150 HVL Macerator Installation



For more technical information on the HVL range please contact us.



www.haigtech.com

It is the policy of our company to continually improve our products and accordingly we reserve the right to alter specifications and appearance without notice.

E3301/1011

The Haigh Engineering Company Limited
Alton Road, Ross-on-Wye, Herefordshire HR9 5NG

Tel: +44 (0) 1989 763131

Fax: +44 (0) 1989 566276

info@haigh.co.uk

