



BOLLFILTER
Protection Systems

AUTOMATIC AND MANUAL
FILTRATION SYSTEMS

PRODUCT BROCHURE



BOLLFILTER UK Limited is part of the BOLL & KIRCH worldwide network



A COMMITMENT TO DESIGN & MANUFACTURING

As one of the leading European manufacturers of automatic water filtration systems, Boll & Kirch is committed to investment in the latest design and manufacturing resources.

The introduction of synchronistic 'lean' engineering techniques and automated storage systems have significantly increased manufacturing efficiency and reduced lead times for customers.

As part of an ongoing programme of product development, a team of experienced design engineers work to create innovative solutions that maximise system efficiency and anticipate changing application needs.



The Boll & Kirch manufacturing facility in Kerpen near Cologne, Germany



The Boll & Kirch site is comprised of 40,327 square metres of design, manufacturing and distribution facilities



Automated racking in computer-controlled storage area



Research and development testing centre



CONTENTS

Boll & Kirch Facility 2-3

Manual Filters

Single Filters	4
Double Filters	5-7

Automatic Filters

General Operation	8
6.18	9
6.19	10
6.18 SUC	11
6.18.2 Heavy Duty	12
Installation Layout	13
Foulex	14
6.18 Skid-mounted	15
6.04 Plug & Play	16
6.64 + 6.72	17

Applications & Aftersales

Case Studies	18-21
Elements & Accessories	22
Spares & Support	23
Offshore	24
Dedicated Business Department	25
Meet the Bollfilter UK Team	26-27

Boll & Kirch's objective is to achieve the very best in competence, precision and quality for the customer, the business and its product range.

Investment in quality, with environmentally controlled production facilities and stringent QC procedures, ensure optimum product performance and reliability.



Part of the main filter production area



Boll & Kirch teams appear at all the main trade shows



Simplex Filters are designed for use where the flow can be stopped for manual cleaning.

- High filtration areas
- High solids holding
- Large range of filtration levels
- Robust reusable stainless steel elements

TECHNICAL SPECIFICATIONS

BOLLFILTER Simplex Filter Range	
Filter sizes	25mm up to 1000mm N/B.
Flow rates	Flows up to 7000 m ³ /hr.
Filtration levels	6mm down to 5 micron.
Materials of construction	Ductile Iron, Carbon Steel, Stainless Steel.
Internals/Lining	Stainless Steel/FIP Epoxy Lining.
Design pressure	Up to 100 bar (depending on model).
Design temperature	-10 to 120°C. (higher or lower temperatures available on request).
Filter elements	Basket, Candle, Multi-mantle, Ring, Cartridge (using materials such as metallic mesh, wedge wire or fibreglass media).
Typical applications	Suitable for all types of liquids. Filter Membrane, Spray Nozzle, Pump, Meter & Heat Exchanger protection. Pipeline scale removal.
Options include	Differential Pressure Indicator/Switch. DWI approved internals, Automatic Air Release Valves. Magnet elements for metallic particle removal.

MANUAL
Duplex
DOUBLE FILTERS & STRAINERS



Duplex Filters are fitted with an integral changeover valve and are designed for use where the flow cannot be stopped for manual cleaning. By diverting the flow through a second filter chamber, the element can be cleaned without interruption of the flow.

- Impossible to completely shut off flow
- 100% duty and standby
- Easy to operate changeover valve
- High filtration areas and solids holding
- Large range of elements & filtration levels
- Robust reusable stainless steel elements

TECHNICAL SPECIFICATIONS

	BOLLFILTER Duplex Filter Range
Filter sizes	25mm up to 250mm N/B.
Flow rates	Flows up to 700 m ³ /hr.
Filtration levels	6mm down to 20 micron.
Materials of construction	Ductile Iron, Carbon Steel, Stainless Steel.
Internals/Lining	Stainless Steel/FIP Epoxy Lining.
Design pressure	Up to 40 bar (depending on model).
Design temperature	-10 to 120°C (higher temperatures available on request).
Filter elements	Basket, Candle, Multi-mantle, Ring, Cartridge (using material such as metallic mesh, wedge wire or fibreglass media).
Typical applications	Suitable for all types of liquids. Filter Membrane, Spray Nozzle, Pump, Meter & Heat Exchanger protection. Pipeline scale removal.
Options include	Differential Pressure Indicator/Switch. Automatic Air Release Valves, Heating Elements/Jackets. Magnet elements for metallic particle removal.



Innovative design with 60 variants.

Ball valve type Duplex Filters are the result of precision engineering carried out in our modern, well-equipped production facility.

This range of filters is designed to meet the requirements of API, ASME and PED.

- Impossible to completely shut off flow
- 100% duty and standby
- High filtration areas & solids holding
- Low DP due to valve design and filter media
- Changeover handle position lock available

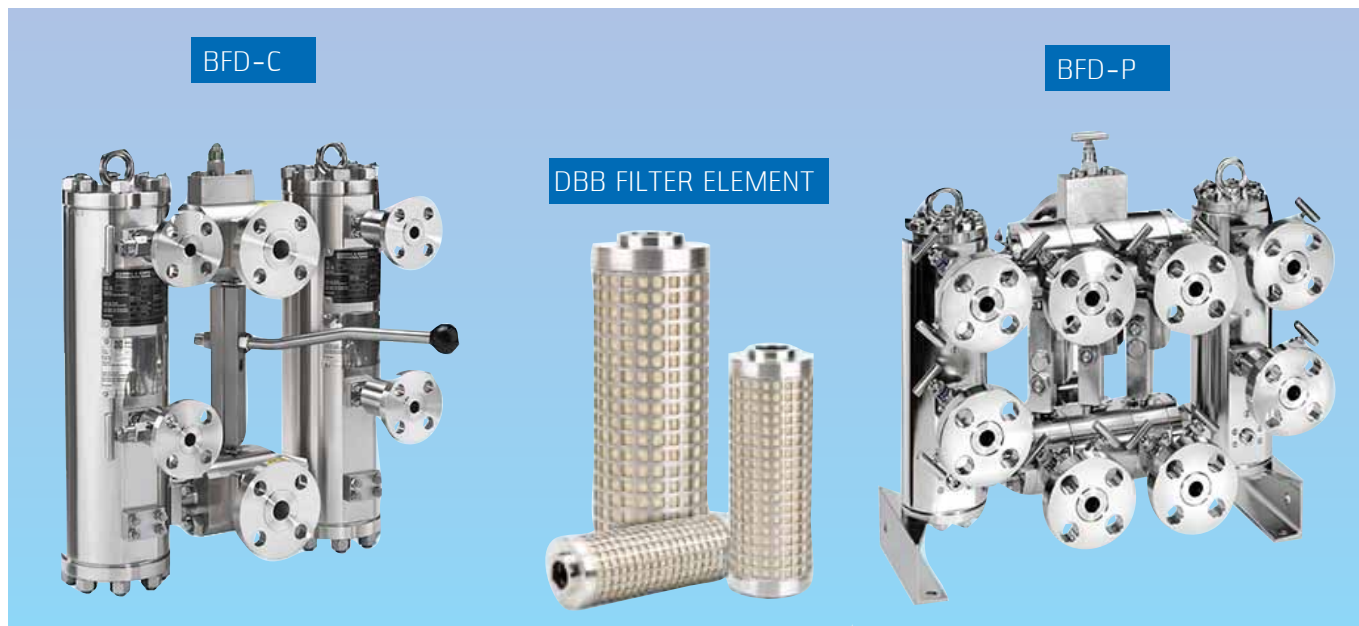
TECHNICAL SPECIFICATIONS

BOLLFILTER Duplex Lube Filter Range	
Filter sizes	25mm up to 150mm N/B.
Flow rates	Flows up to 160 m ³ /hr.
Filtration levels	Down to 1 micron.
Materials of construction	Ductile Iron, Carbon Steel, Stainless Steel, Duplex & Super Duplex
Internals	Stainless Steel.
Design pressure	Up to 40 bar (depending on model).
Design temperature	Up to 120°C (higher temperatures available on request).
Filter elements	Fibreglass or Stainless Steel Pleated Elements or Stainless Steel Mesh type Candle Elements.
Typical applications	Lube Oil Filtration for Turbines, Compressors, Diesel Engines, Fuel Oil Filtration.
Options include	Differential Pressure Indicator/Switch. Drip Tray, Safety Covers. Automatic Air Release Valves, Heating Elements/Jackets. Magnet elements for metallic particle removal.

MANUAL

Duplex

GAS COALESCER FILTERS



Our state-of-the-art design and machining centres ensure the most exacting standards with all filters designed and manufactured in-house. We can produce change-over valves (DBB valves) and filter vessels for secure operation at very high pressure.

In-house testing facilities guarantee filter integrity and accuracy of the filter element.

- Removal of solids and liquids from gases
- Added security of double block and bleed changeover valve
- Flexible designs to meet custom requirements

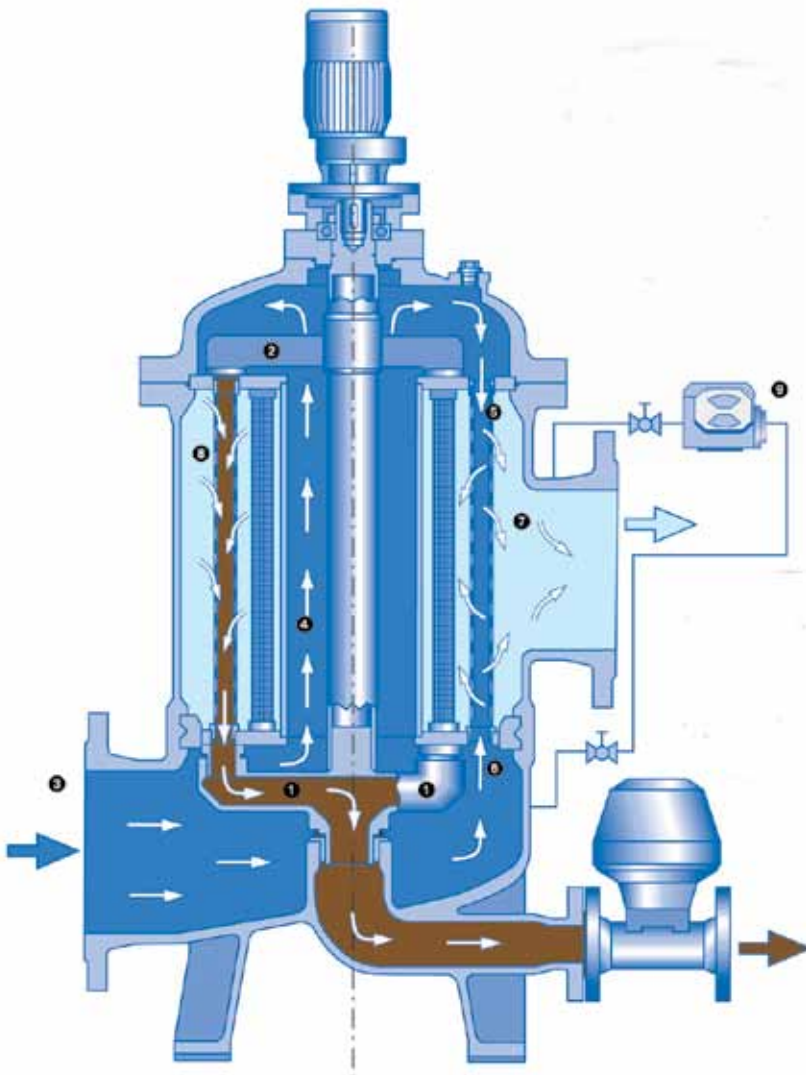
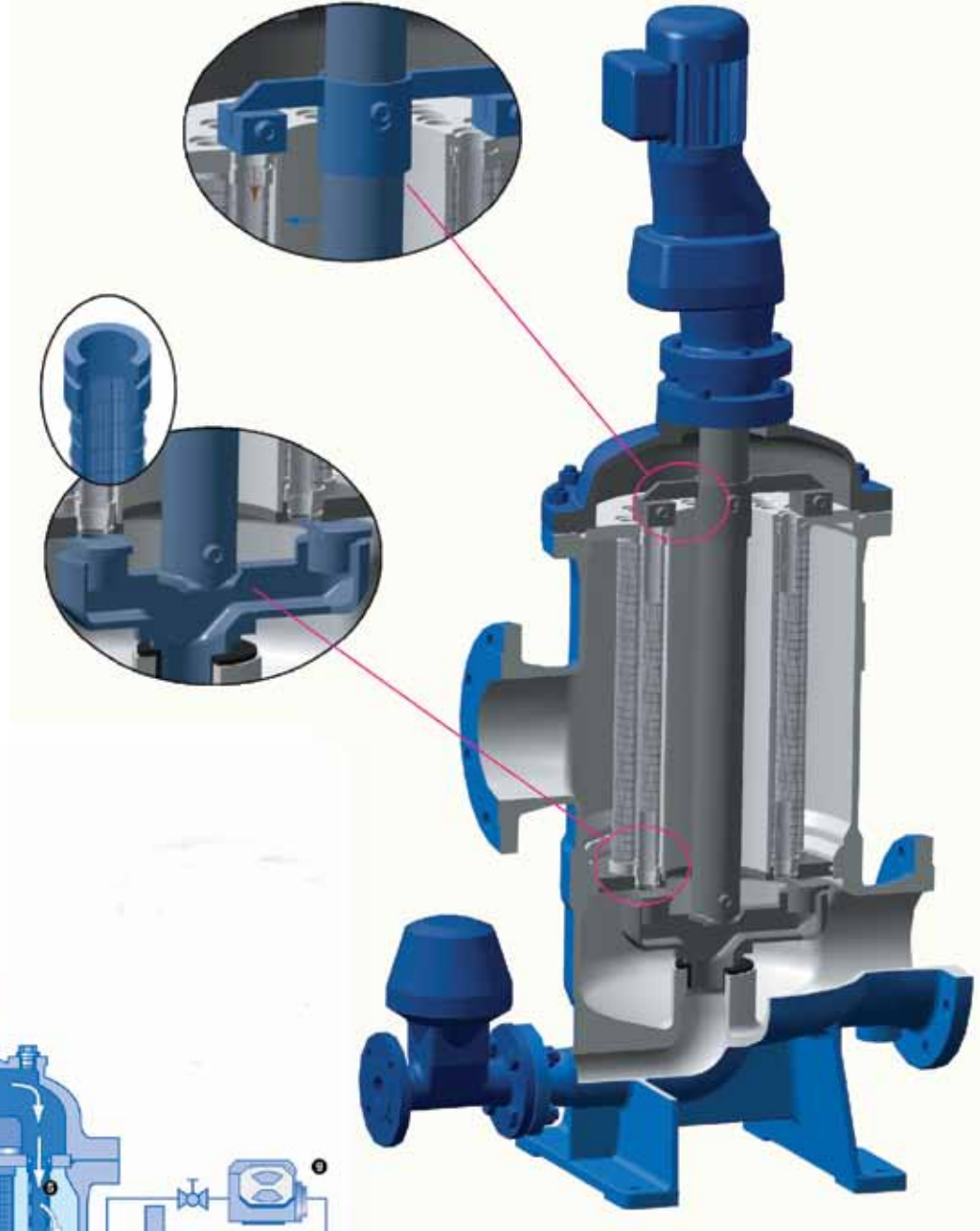
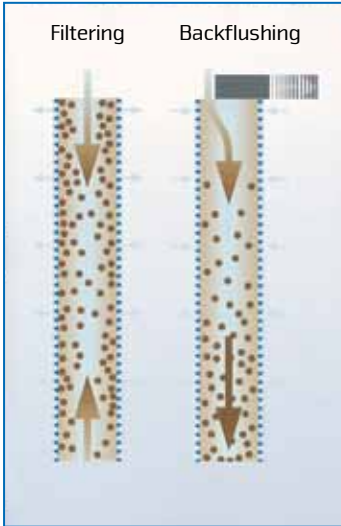
TECHNICAL SPECIFICATIONS

BOLLFILTER Duplex Gas Filter Range	
Filter sizes	25mm up to 200mm N/B.
Flow rates	Flows up to 100,000 Nm ³ /hr.
Filtration levels	Down to 0.1 micron.
Materials of construction	Carbon Steel, Stainless Steel, Duplex & Super Duplex Stainless Steels.
Internals	Stainless Steel.
Design pressure	500 bar.
Design temperature	-20 to 120°C (higher or lower temperatures available on request).
Filter elements	Fibreglass & Stainless Steel Particle Filters and Coalescer Elements. Stainless Steel Demisters and Cyclone Elements.
Typical applications	Removal of solids and liquids from gas. Seal Gas, Fuel Gas, Process Gas.
Options include	Double block and bleed changeover valve. Demister Elements and Cyclone Separators.



AUTOMATIC Backflushing Filter GENERAL OPERATION

WEDGE WIRE ELEMENT



1. Flushing arm, 2. Covering arm, 3. Inlet flange, 4. Central riser pipe.
5. Here 50% of the medium flows into the top of the filter elements.
6. The other 50% flows up from the bottom of the filter elements.
7. The filtered medium then passes through these gaps.
8. This shows the filter candles being cleaned without the filtration process being interrupted thanks to the injection flow.
9. The back flushing cycle. Visit our YouTube Channel on www.bollfilter.co.uk for the 6.18 video and see the filtration process in action.

AUTOMATIC Backflushing Filter TYPE 6.18



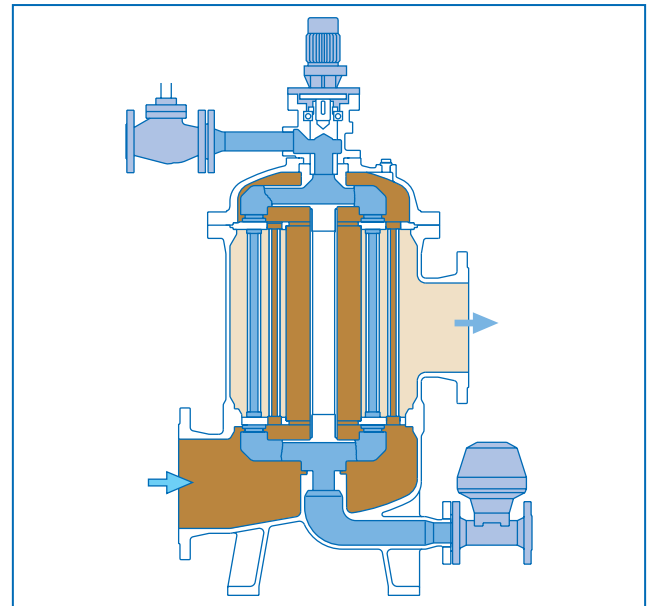
- Low maintenance
- Efficient cleaning
- Can handle large solids and cope with high solids loading
- On-stream cleaning in seconds
- Low backflush using process fluid

TECHNICAL SPECIFICATIONS

BOLLFILTER 6.18 Automatic Filter	
Filter sizes	50mm up to 1000mm N/B.
Flow rates	5 m ³ /hr up to 10,000 m ³ /hr.
Filtration levels	6mm down to 10 micron.
Materials of construction	Ductile Iron, Carbon Steel, Stainless Steel.
Internals/Lining	Stainless Steel/FIP Epoxy Lining.
Working pressure	2 bar up to 16 bar as standard (higher pressures available).
Design temperature	0 to 80 °C (other temperatures available on request).
Filter elements	Wedge Wire Tubes, Mesh Tubes, Round Profile Wire Tubes.
Typical applications	Filter Membrane, Spray Nozzle, Heat Exchanger protection. General pipeline scale removal.
Options include	Foulex™ Coated Elements. DWI approved internals for potable water applications. Control panels to customer specification. Skid mounted pump and control system for low pressures.



AUTOMATIC Low Pressure Backflushing Filter TYPE 6.19



- Operates at very low working pressures
- Efficient cleaning
- Uses external washwater supply to backflush
- On-stream cleaning in seconds

TECHNICAL SPECIFICATIONS

BOLLFILTER 6.19 Automatic Filter	
Filter sizes	50mm up to 400mm N/B.
Flow rates	5 m ³ /hr up to 2200 m ³ /hr.
Filtration levels	6mm down to 25 micron.
Materials of construction	Ductile Iron, Carbon Steel, Stainless Steel.
Internals/Lining	Stainless Steel/FIP Epoxy Lining.
Design pressure	Typical minimum - 0.5 bar.
Design temperature	0 to 80°C (other temperatures available on request)
Filter elements	Wedge wire Tubes, Mesh Tubes, Round Profile Wire Tubes.
Typical applications	Washwater Pump, Filter Membrane, Spray Nozzle & Heat Exchanger protection. General pipeline scale removal.
Options include	Foulex™ Coated Elements. DWI approved internals for potable water applications. Control panels to customer specification. Skid mounted pump and control system.

AUTOMATIC Low Pressure Backflushing Filter TYPE 6.18 SUC



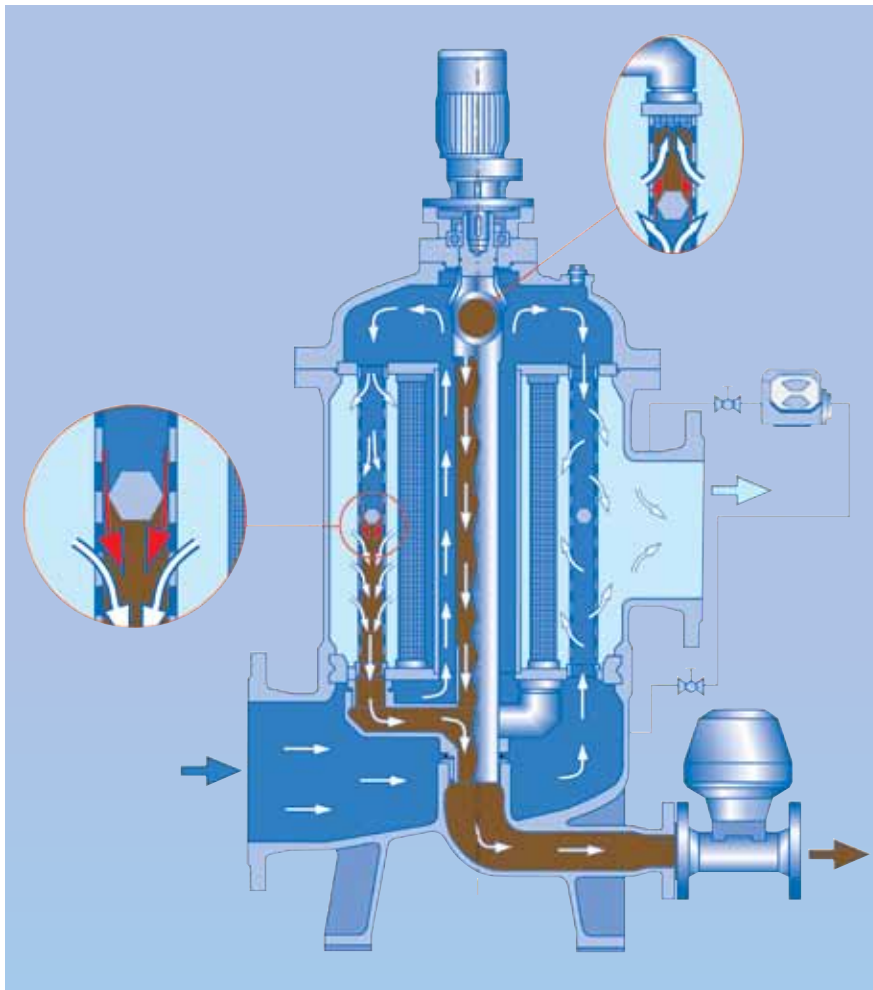
- Operates at low working pressures
- Efficient cleaning using backflush assist pump
- Can handle large solids and cope with high solids loading
- On-stream cleaning in seconds
- Low backflush using process fluid
- Available as packaged, fully assembled plant (as pictured)

TECHNICAL SPECIFICATIONS

BOLLFILTER 6.18 SUC Automatic Filter	
Filter sizes	50mm up to 1000mm N/B.
Flow rates	5 m ³ /hr up to 10,000 m ³ /hr.
Filtration levels	6mm down to 25 micron.
Materials of construction	Ductile Iron, Carbon Steel, Stainless Steel.
Internals/Lining	Stainless Steel/FIP Epoxy Lining.
Working pressure	Typical minimum – 0.5 bar.
Design temperature	0 to 80 °C (other temperatures available on request)
Filter elements	Wedge Wire Tubes, Mesh Tubes, Round Profile Wire Tubes
Typical applications	Filter Membrane, Spray Nozzle, Pump, Heat Exchanger protection. Pipeline scale removal. Water and effluent.
Options include	Foulex™ Coated Elements. DWI approved internals for potable water applications. Control panels to customer specification. Manual bypass strainer.



AUTOMATIC Backflushing Filter 6.18.2 HEAVY DUTY FILTER



- Elements cleaned from both ends
- Can handle large solids and high solids loading
- Fast on-stream cleaning
- Hydrodynamic backflushing system
- Flushing arms offset by 90 degrees

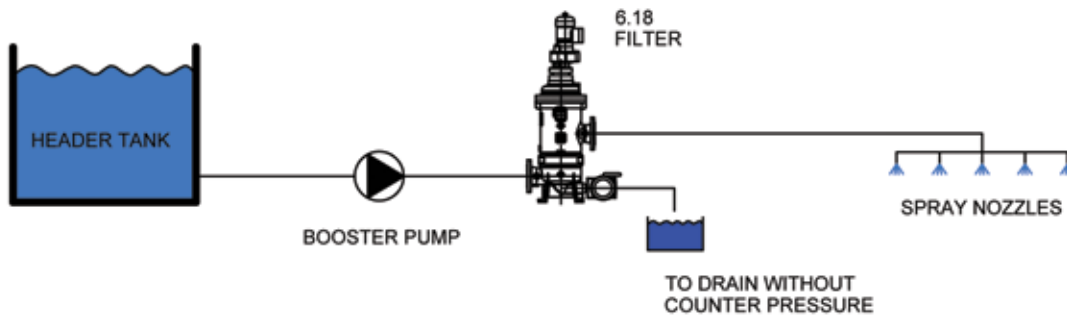


TECHNICAL SPECIFICATIONS

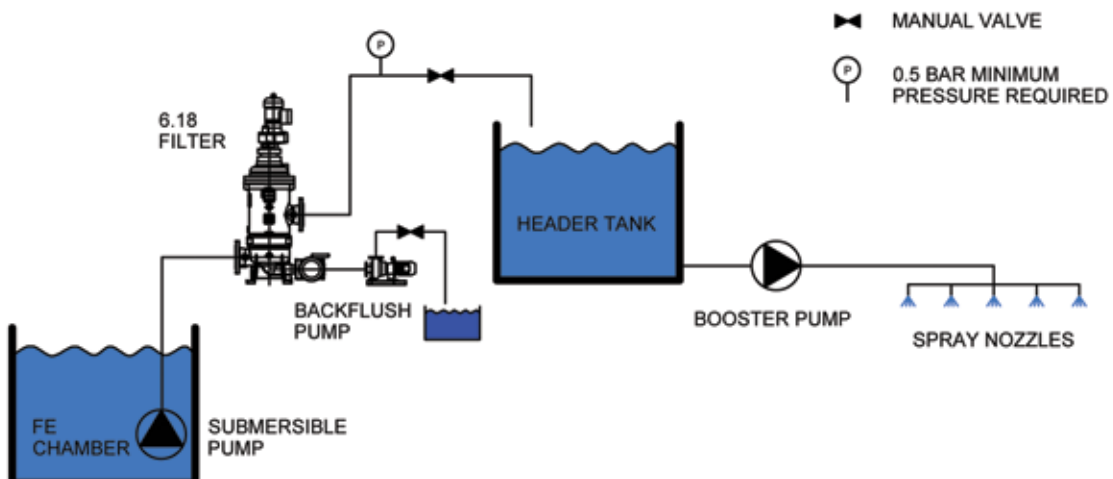
BOLLFILTER 6.18.2 Automatic Filter	
Filter sizes	200mm up to 900mm N/B.
Flow rates	Up to 9,000 m ³ /hr.
Filtration levels	6mm down to 25 micron.
Materials of construction	Carbon Steel, Stainless Steel, Duplex and Super Duplex
Internals/Lining	Stainless Steel/FIP Epoxy Lining/Rubber Lining/DWI Lining.
Working pressure	2 to 10 bar.
Design temperature	0 to 80 °C (Other temperatures available on request)
Filter elements	Wedge Wire Tubes, Round Profile Wire Tubes, Mesh Tubes.
Typical applications	Raw Water Inlets, River & Canal Water, Irrigation & Seawater, Injection, Re-injection & Cooling water. Coarse Inlet Strainer, ACC/RCW Strainer.
Options include	Foulex™ Coated Elements. DWI approved internals for potable water applications. Control panels to customer specification. Manual bypass strainer.



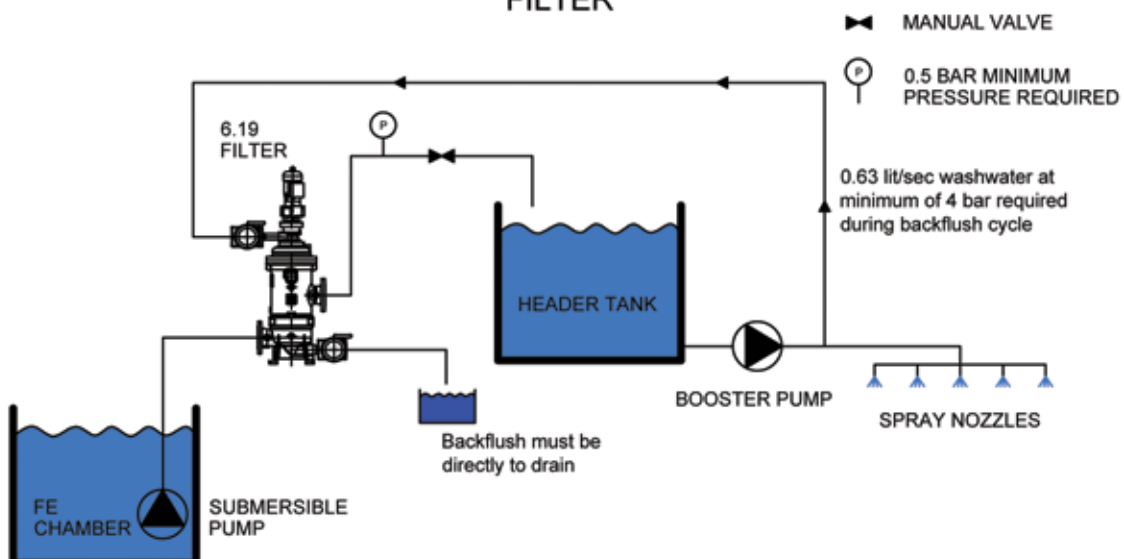
BOLLFILTER TYPE 6.18 FILTER



BOLLFILTER TYPE 6.18 SUCTION FILTER



BOLLFILTER TYPE 6.19 FILTER





FOULEX from BOLLFILTER To counteract and prevent Biofilm

What is biofilm?

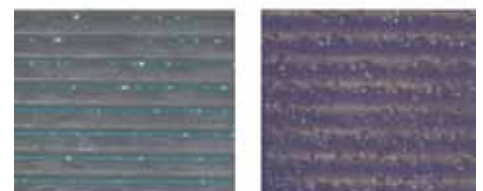
Biofilm consists of micro-organisms and their secretions, which produce hydrogels in connection with water. These hydrogels are relatively stable and therefore difficult to remove. FouleX is a very thin, silver-containing layer which is applied to the filter elements. This unique coating prevents or reduces the formation of biofilm. FouleX can be applied to new or existing filter elements in either wedge wire or mesh design.

Two Backflushing BOLLFILTERs Automatic were installed at the WAG Water Treatment Plant in Roetgen, Germany, for the filtration of dam water. Removing particulates down to 150 microns, they provide primary protection for the membrane plant used for the ultra-filtration of potable water supply to the Aachen region.

However, due to the presence of manganese bacteria, a biofilm formed on the filter elements after just three month's operating time. As a result, the normally self-cleaning filters had to be manually cleaned – washed inside and out with a high-pressure cleaner and decontaminated with an acidic cleaning agent. The solution to the problem was a new development from BOLL & KIRCH's R & D Team: FouleX.

FouleX is an antibacterial coating designed to reduce biofilm contamination. It was applied to the WAG filter elements, after 3 months of normal operation, the elements were checked and found to be free from biological growth. The operating company at WAG was delighted with the improved filter performance. "With the FouleX coating, the operating time without cleaning has been extended to 16 months. Better still, the cleaning is much easier, you just rinse with water."

A maintenance interval of 12 months is normally recommended for BOLLFILTER Automatic Systems. At the WAG plant, the FouleX coating has increased this by a third, significantly reducing maintenance and downtime. The cost for cleaning chemicals has also been reduced.



TOP. BOLLFILTER Automatic Type 6.18 Filter elements

SECOND. BOLLFILTER Automatic Type 6.18 System at WAG Water Treatment Plant

THIRD. WAG contaminated filter systems before treatment with FouleX

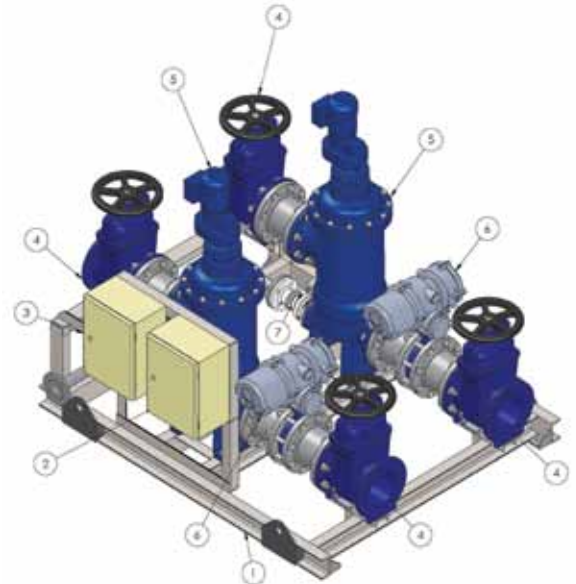
BOTTOM right. Comparison of filter elements treated with FouleX

BOTTOM left: Filter element free from biofilm

AUTOMATIC TYPE 6.18 Skid-mounted Package System



- Complete package for easy installation and maintenance
- Efficient cleaning
- Can handle large solids and high solids loading
- On-stream cleaning in seconds
- Low backflush using pressurised fluid
- Duty/Standby system available with automatic changeover facility



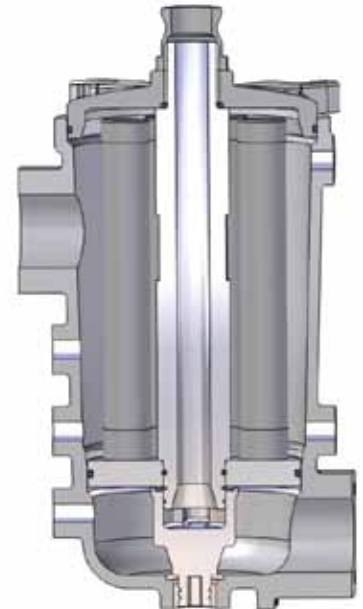
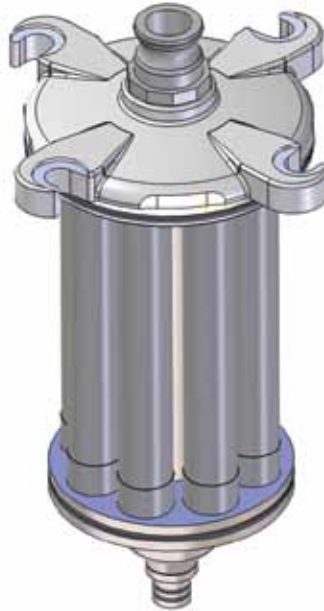
- 1 Skid base
- 2 110v Junction box
- 3 415v Junction box
- 4 Gate valves
- 5 Automatic filters
- 6 Actuators butterfly valves

TECHNICAL SPECIFICATIONS

BOLLFILTER 6.18 Skid-mounted Automatic Filter	
Filter sizes	50mm up to 1000mm N/B.
Flow rates	5 m ³ /hr up to 10,000 m ³ /hr.
Filtration levels	Down to 10 micron.
Materials of construction	Ductile Iron, Carbon Steel, Stainless Steel.
Internals/Lining	Stainless Steel / FIP Epoxy Lining / DNI Lining.
Working pressure	Up to 16 Bar.
Design temperature	-10 to 80°C (other temperatures available on request).
Filter elements	Wedge Wire Tubes, Mesh Tubes, Round Profile Wire Tubes.
Typical applications	All applications as per the 6.18/6.19 filters.
Options include	Butterfly Valves/Gate Valves/Actuated Auto/Auto or Auto/Manual Bypass Options.



AUTOMATIC Small Low Cost Backflushing Filter Type 6.04



- Very easy to dismantle.
- A functional unit, just a cover with inner parts, no tools required.
- High filtration area
- Small footprint
- Efficient, automatic operation
- On-line flushing

TECHNICAL SPECIFICATIONS

BOLLFILTER 6.04 Automatic Filter	
Filter sizes	40mm N/B.
Flow rates	Up to 18 m ³ /hr (5LPS).
Filtration levels	50, 100, 200 and 500 micron.
Materials of construction	Aluminium Housing hard coated.
Internals/Lining	Stainless Steel Element, High Performance Plastic.
Design pressure	10 Bar.
Design temperature	0 to 60°C
Filter elements	Woven Wire Mesh / Foulex™ Coated Elements.
Typical applications	Irrigation, Domestic, HVAC, Machine Tools, Cooling, Spray Wash, Sealing Water and Final Effluent Washwater.
“Plug & Play”	Supplied ready to use. Filter with hard coated aluminium housing, mating flanges drilled G1 1/2 inch stainless steel mesh candle filter elements. All other internal parts are plastic, electric drive motor. Differential switch/ indicator type 4.46.2, backflush valve & integrated 24V DC control.

AUTOMATIC
Oil & Coolant Filter
TYPE 6.64 + 6.72



Both the 6.64 & 6.72 series are compact automatic self-cleaning filters offering a large filtration area with highly efficient, effective compressed air assisted backflushing.

- Low maintenance automatic operation
- Low backflush quantities & pressure loss
- Compact with large filter area
- Low operating costs

TECHNICAL SPECIFICATIONS

BOLLFILTER 6.64 & 6.72 Automatic Filters	
Filter sizes	40mm up to 400mm N/B.
Flow rates	Dependent on liquid type and viscosity
Filtration levels	2mm down to 5 micron.
Materials of construction	Ductile Iron.
Internals/Lining	Ductile Iron/Nickel-plated Lining (for aqueous applications).
Working pressure	0.5 bar up to 10 bar as standard.
Design temperature	-10 to 80°C (other temperatures available on request).
Filter elements	Cylindrical screw-in candle type with special weave mesh.
Typical applications	Lubricating Oils, Machining Coolants, Industrial Washing Liquids, HFO, Fuel Oils, Diesel Oils.
Options include	Backflushed liquid recycling unit. Manual standby filter complete with manual change-over valve.

DRINKING WATER



KELDGATE WTW
Water Treatment for Yorkshire Water

Application: Filtration of raw borehole water. Removal of particulates to protect Ultra Filtration Membrane Plant from risk of blockage and damage to sensitive membrane filters.

System: 11x Boll 6.19 DN200 Low Pressure Automatic Filters, 100 micron.

DRINKING WATER

LOUND WTW - DAF PLANT
Water Treatment

Application: The plant treats up to 18 million litres a day, using ferric chloride to bring organic matter out of solution. To remove the resulting flocs, water highly saturated with air is injected into the treated water, bringing the flocs to the surface.

System: 2x BOLLFILTERs Automatic Type 6.18 Flow rate: up to 1.8 MI/d, Filtration level: 500 micron.



DRINKING WATER

MOULTON WTW
Water Treatment



Application: Nitrate removal systems to Anglian Water for un-manned borehole water treatment plants. The skid-mounted systems incorporate BOLLFILTERs to provide particulate removal (down to 50 microns). Christ Kennicott equipment.

System: BOLLFILTER Automatic Type 6.18 - 86 cubic metres/h, DN150, 50 micron, 1.5 bar.

EFFLUENT TREATMENT

BECKTON STW
Thames Water



Application: Following primary and secondary treatment, washwater is fed into the screens via a series of nozzles to wash the sludge off and clean the screens and brushes. In order to prevent the washwater nozzles from blocking and disrupting the screenings separation process, featuring a BOLLFILTER automatic filtration system.

System: 2x BOLLFILTER Automatics Type 6.19 DN200, Flow Rate: 216 m³/hr, Filtration Level: 1mm.

EFFLUENT TREATMENT

VINES CROSS STW
Southern Water Sewage Plant

Application: Filtration of final effluent from humus tanks used to clean inlet screens and general washwater. Removal of particulates such as algae and sludge, to protect high pressure multi-stage pump from blockage.

System: Boll 6.18 SUC DN100 Low Pressure Automatic Filter 500 microns.



EFFLUENT TREATMENT

CRANLEIGH STW
Thames Water Sewage Plant



Application: The NSAF plant handles all the waste water for Cranleigh. Following secondary treatment, the waste water is passed through the NSAF system, which uses a biological oxidation process to remove microscopic particles.

System: BOLLFILTERs Automatic Type 6.18 SUC DN250 with BOLLFILTER Simplex Type 1.03 Manual Bypass Flow Rate: 120 l/s Filtration Level: 6mm with 2D Wedge Wire Operating Pressure: 0.5 bar.

STEEL INDUSTRY



TATA STEEL Port Talbot, Wales

Application: Filtration of raw water supply, plant cooling and re-cooling water. Removal of particulates from internal works reservoir feeding general water system, slab caster cooling water to prevent spray nozzles blocking, and cooling tower water serving re-cooling system.

System: Reservoir: 2x Boll 6.18 SUC DN400 Automatic Filters, 200 microns. Slab Caster: 2x Boll 6.18 DN250 Filters, 300 microns, Simplex Strainer Back-up. Re-Cooling: Boll 6.18 DN500, 300 microns.

POWER STATION

HINKLEY POINT Power Station

Application: British Energy Advanced Gas-cooled Reactor (AGR) nuclear power station. As part of the process, the nuclear reactors require large quantities of cooling water. At Hinkley Point B, seawater from the Bristol Channel is used to provide the reactor cooling water.

System: 4x Boll Automatic Seawater Filters with Super Duplex Stainless Steel internals. TUV approved Filtration Level: 2000 microns Flow Rate: 1631 m³/hr Operating Pressure: 8 bar.



POWER PLANT



MARCHWOOD POWER Port of Southampton

Application: Marchwood Power Station is a modern CCGT (combined cycle gas turbine) Power Station using cooling water. Raw water is also used on-site as general wash water, including for the removal of debris, such as seaweed, mussel lava and other organic matter entering the system.

System: 3x BOLLFILTER Type 6.18.2 DN200, Filtration: 500 microns. Flow: 206 m³/hr @3.5 bar. Internals: 316 stainless steel. Rubber lined filter body. Special profile hydrodynamic filter elements.

CHEMICAL & PETROCHEMICAL

CORYTON Aviation Fuel Refinery Pumping Station



Application: A BOLLFILTER Automatic Filtration System has been installed within the main refinery pumping station to ensure that the whole aviation fuel pipeline is kept clean and free from particulates. Regular backflushing ensures that the filter elements remain clear without the need for maintenance or plant downtime.

System: BOLLFILTER Automatic Type 6.18 12" ANSI 150lbs
Flow Rate: 550 m³/hr Filtration Level: 250 micron. Liquid:
Aviation Fuel, Diesel Oil & Petrol Operating Pressure: 19 bar.

POWER PLANT

DRESSER RAND
Steam Turbine Protection

Application: Filtration units for skid-mounted steam turbine systems. Removal of particulates from closed loop system supplying control oil and lube oil to protect moving parts and prevent damage to high value capital equipment.

System: 1x Boll Lube Oil Filter Type BFD Duplex with Glassfibre Elements @10 micron, 1x Control Oil Filter.



CHEMICAL & PETROCHEMICAL

PORVOO GAS REFINERY Finland



Application: For the extension of the diesel production facilities of one of the largest refineries in Scandinavia, the Porvoo Refinery in Finland, MAN Turbo AG supplies the hydrogen gas turbocompressor for a capacity of 3,900 m³/hr. The dry gas sealing system of the compressor, driven by hydrogen and nitrogen, demands absolute purity.

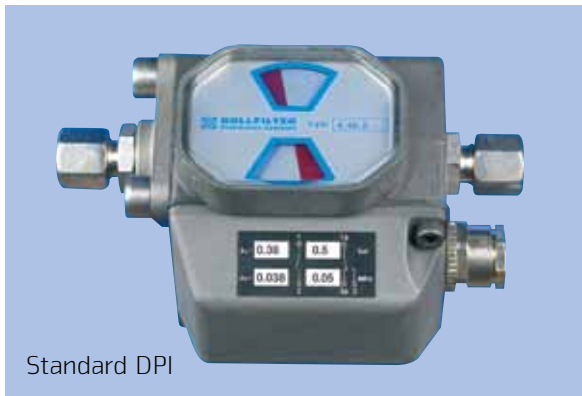
System: BOLLFILTER Duplex Type BFD-C BOLLFILTER Duplex Type BFD-P for a MAN Turbo Hydrogen Gas Turbocompressor.



FILTER ELEMENTS



A range of accessories are available including: standard and custom control panels; pneumatic or electric backflush valves; standard DPI/DPS or adjustable switches; and DP transmitters.



Standard DPI



Typical stainless steel panel with glazed outer door



Typical GRP Panel



NEW LOGO FOR SPARES AND SERVICE

Bollfilter UK combines the strength of a leading European manufacturer with local sales and service support providing in-depth technical support, including field engineering providing maintenance, contract servicing and fast, efficient spares supply.

TRAINING

Bollfilter UK will start to offer training courses for customers from 2014.

EXTENDED GUARANTEE

A three year extended warranty is available for the Boll 6.18 automatic filter. This covers a yearly site visit, full strip down service, reassembly and test and, if repeated on annually, can further extend the guarantee on a year by year basis.

SPARES

Our dedicated UK spares service, with direct access to the Boll & Kirch automated storage and distribution system, ensures minimum response times. Special next day delivery can also be arranged in certain circumstances.

All parts are clearly marked to ensure that only genuine spares are used.



Michael Chadwick Service Department Manager on the left with Senior Service Engineer Liam Fitzpatrick holding a BOLLFILTER 2200 Control Panel



Candles Filter Element



Multi mantle element





OFFSHORE APPLICATIONS

OFFSHORE EXPERTISE

Many offshore filtration applications are there to remove coarse suspended solids that could deposit on process equipment creating scale and corrosion sites.



Above: North Sea oilfields hold more reserves than originally anticipated and are expected to produce 600 mbd of oil and 660 mmscfd of gas compression



Above: VWS for SBM FPSO Ilhabellha, Mariqua and Saquerema. Total 3 x 3 Simplex Coarse Filters

Below: TOTAL Usan Offshore Oil Field Project West Africa NIGERIA Protection of S.R.P. Sulphur Reduction Package



Above: VWS for PETROBRAS FPSO P63

Below: Mc Dermott Peregrino FPSO OFFSHORE BRAZIL Protection of S.R.P. Sulphur Reduction Package





FILTERS TEAM

Our dedicated UK FILTERS TEAM, with direct access to the BOLL & KIRCH GLOBAL INFORMATION system, ensures minimum response times for filter enquiries.

UK BACK OFFICE

Bollfilter UK combines the strength of a leading European manufacturer Capital Equipment support, providing in-depth technical support, including project timings, financial arrangements, taxation queries and fast, efficient coordination from the German factory for your product supplies.



From the Filters & Capital Equipment Department Robert Eden Sales Manager on the right with Joe Dow & Emily-Jayne Dow



The BOLLFILTER UK Team 2013

Industry & Environment	Marine & Power
<ol style="list-style-type: none"> 1. Automobile industry 2. Steel industry 3. Machine tool industry 4. Paper industry 5. Chemical and petrochemical industry 6. Off-shore industry 7. Power plant engineering 8. Power plants and energy suppliers 9. Producers of heating, ventilation and air conditioning systems 10. Producers of refrigeration and heat technology 11. Water treatment and sewage plant technology 12. Suppliers of drinking water 	<ol style="list-style-type: none"> 1. Shipyards 2. Shipping companies 3. Module manufacturers 4. Manufacturers of ship's propulsions 5. Manufacturers of auxiliary diesel engines 6. Producers of off-highway vehicles 7. Locomotive producers 8. Producers of power generation plants
	<h3>Oil & Gas</h3> <ol style="list-style-type: none"> 1. Steam and gas turbines 2. Compressor manufacturers 3. Generators 4. Construction equipment for the oil and gas industry 5. Energy generators and providers 6. Chemical and petrochemical industries 7. Off-Shore Industry

THE BOLLFILTER BUSINESS HIERARCHY

BOLLFILTER UK covers all of the market sectors and segments seen in the table (left). Some products cross over between these sectors and segments. One thing that's important to our customers is the fact that we carry out all types of filtration.

BOLLFILTER has 3 business departments:

- Filters & Capital Equipment
- After Sales Service
- Genuine Spare Parts

BOLLFILTER WHEEL OF FILTRATION MEDIA

This wheel diagram shows the diverse ranges of liquids and gases that can be treated with the BOLLFILTER RANGE.





MEET THE DIRECTORS & EMPLOYEES

BOLLFILTER UK TEAM

THE BOLLFILTER UK TEAM 2014

Bollfilter UK is a team of highly motivated, positive and professional people with extensive knowledge and experience of the filtration industry.

The company is in the business of providing complete filtration solutions and expertise through the supply of quality equipment, servicing, spares and support.

Bollfilter UK is dedicated to meeting and exceeding customer' expectations from first point of contact to selection and supply of equipment, after-sales support, spares, advice, commissioning and service, and has recently completed a major staff development programme.



John Dow
Managing Director & Ocean Racing Yachtsman



Robert Eden
Sales Manager & Sharp Shooter



Michael Chadwick
Service Department Manager & Carp Angler



Janine Harris
Spare Parts Manager & Expert Horsewoman



Terry Watts
Office Manager & Craftswoman



Aaron Moyer
Warehouse Manager & Go-cart champion

TEAM MEMBERS AT WORK AND THEIR HOBBIES



Veronica Brown
Financial Director & Fund-raising Explorer



Laura Morgan
Spare Parts Administrator & Gymnast



Liam Fitzpatrick
Senior Service Engineer & Hunter



Emily-Jayne Dow
Proposals and Expediting & Guitarist



Joe Dow
Proposals Manager & Footballer



Alex Wood
Service Engineer & Off Road Motorcyclist



Laurence Dunn MCM
Marketing Manager & Super Bullithead



Cert. 31,724
 Authorised for manufacture of
 miniature pressure vessels.
 Kerpen-Sindorf



Cert. 31,723
 Authorised for manufacture
 of pressure vessels.
 Kerpen-Sindorf



BOLLFILTER UK Limited

Unit 9 Station Road,
 Tolleshunt D'arcy
 Essex CM9 8TY

Tel: (01621) 862180

Fax: (01621) 869257

E-mail: filters@bollfilter.co.uk

Website: www.bollfilter.co.uk