

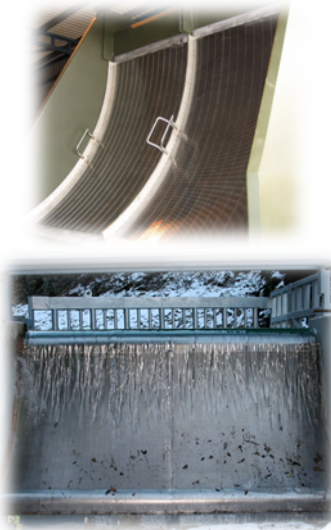
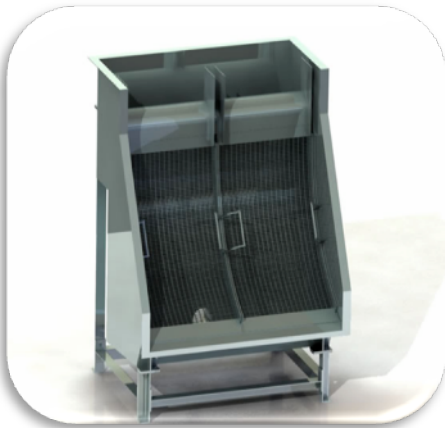
Gaparator Range - Parabolic Rundown Screen (PRS)



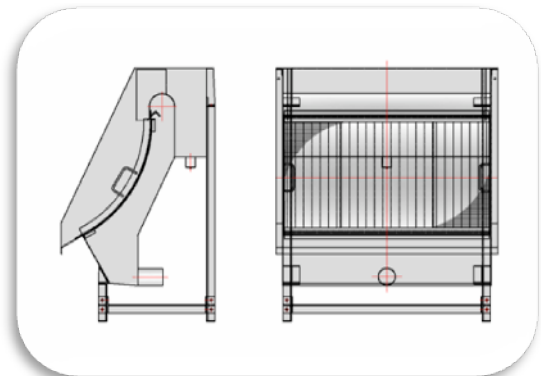
The Gaparator parabolic rundown screen (PRS) is a static screen widely used in many process and effluent conditions for the efficient separation of liquids and solids.

The non-mechanical, low maintenance aspect of the Gaparator PRS relies on a uniform feed over a fabricated distribution weir. A reversible wedge-wire sieve bends with a cross-flow presentation to allow effective dewatering and gravity solids discharge. Standard radii at varying widths are available to suit flow rate and slot gap requirements.

The Gaparator PRS is available as standard with all wetted parts being manufactured from 304 or 316 grade stainless steel. A mild steel painted or galvanised carcass can be provided to accommodate low budgets and specific applications. Variations to the manufacturing standard can include as-built or retro-fit spray bars with top and front covers incorporating hinged inspection doors.



KEY DATA	
Media : liquids	Grey water, Industrial effluents, Process water, Sewage, Storm water
Media : solids	Sewage screenings
Screen types	Inlet screens, Parabolic screens, Rundown screens
Materials	Stainless steel, Stainless steel (304), Stainless steel (316)
Features	No moving parts
Maximum aperture size (mm)	3
Minimum aperture size (mm)	0.25



FLOW CAPABILITIES PER SCREEN WIDTH

FIGURES ARE BASED ON AVERAGE THROUGHPUTS AND CONDITIONS. FOR SPECIFIC APPLICATIONS PLEASE CONTACT TECHNICAL SALES

SLOT GAP (mm)	PRS 350		PRS 750		PRS 1200		PRS 1500	
	gpm/ft	m ³ /hr/m	gpm/ft	m ³ /hr/m	gpm/ft	m ³ /hr/m	gpm/ft	m ³ /hr/m
0.25	6.0	5.50	10.25	9.50	12.0	11.25	15.50	14.20
0.50	11.0	10.0	18.25	16.50	25.0	22.50	31.25	28.5
0.75	23.0	21.0	40.0	36.0	42.0	38.0	52.0	46.0
1.00	32.0	28.0	51.0	48.0	62.0	58.0	77.0	72.0
1.50	47.0	43.0	77.0	71.0	103.0	95.0	130.0	120.0
2.00	62.0	58.0	103.0	95.0	125.0	114.0	157.0	142.0
3.00	78.0	72.0	130.0	120.0	166.0	153.0	206.0	192.0